

tempmate.[®]-S1 PRO

Configuration Tool Manual





1. Manual

The configuration tool manual guides the user on how to use the tool for generating configuration for their respective devices.

The configuration tool supports tempmate.®-S1 PRO T and tempmate.®-S1 PRO TH.

2. Features

- Configuration Generation
- Supports S1 Pro T and S1 Pro TH
- TXT Config
- Time-zone selection
- Temperature Unit Selection (Celsius & Fahrenheit)
- Schedule Start Support
- System Sync Time Enabled
- Temperature & Humidity Support

3. Requirements

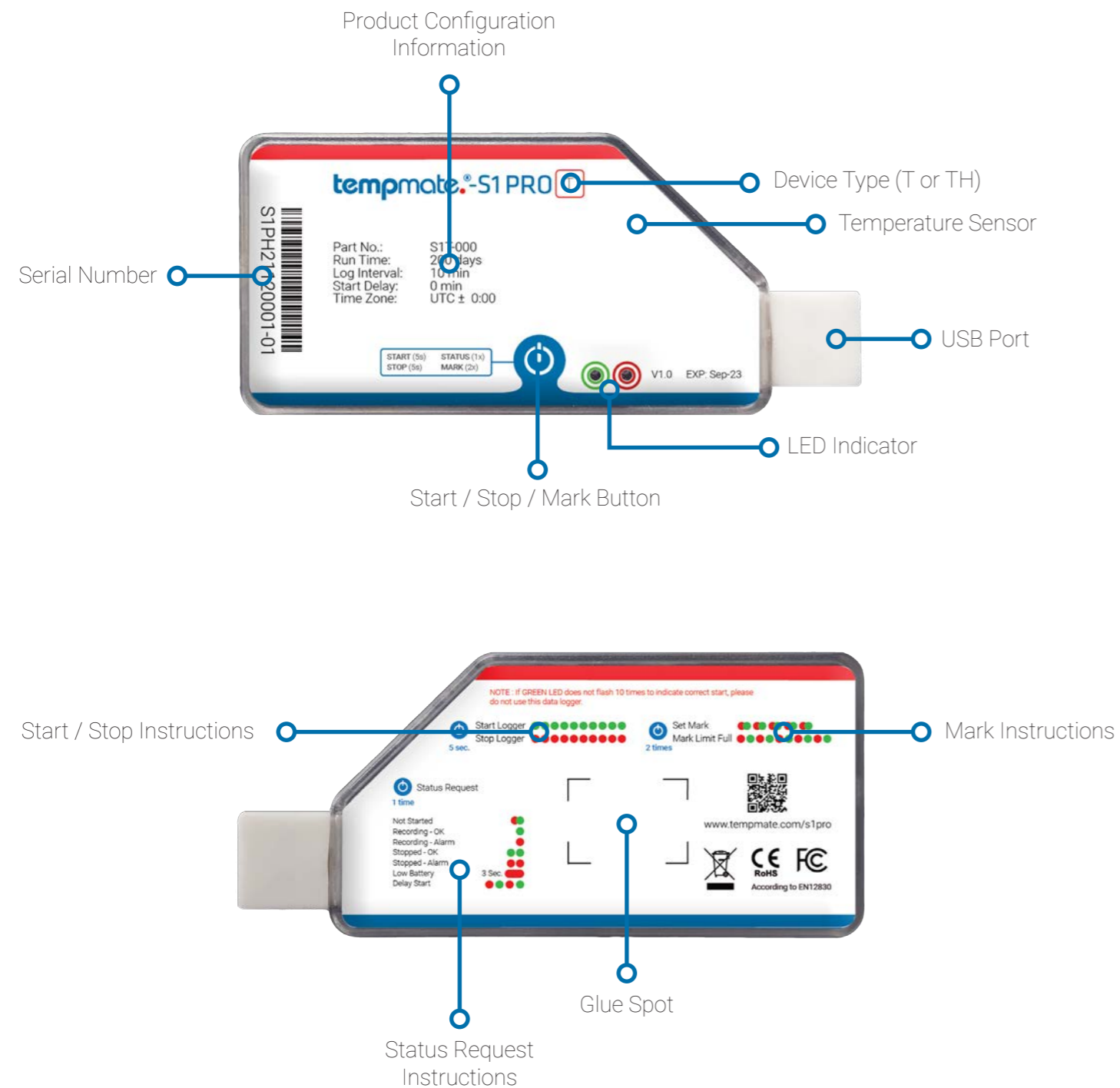
.NET Framework 4.6 and above

4. tempmate.®-S1 PRO Models

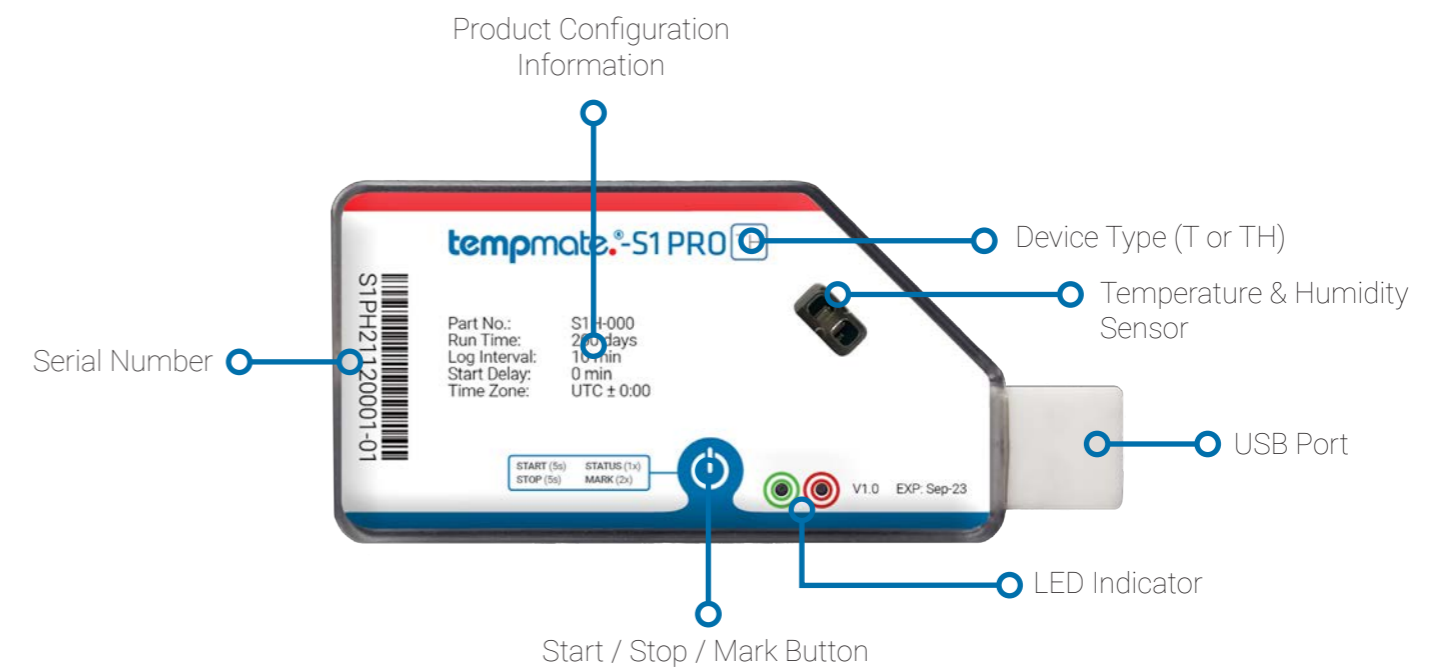


One-way	●	●
Temperature	●	●
Rel. humidity		●

5. Device Description T



6. Device Description TH



Configuration Tool Description

- 1) **Device:** This option allows you to select the device for which the configuration needs to be generated. It supports tempmate.@-S1 PRO T & tempmate.@-S1 PRO TH.
- 2) **Log Interval:** This option allows you to set the duration of the log interval for the device. The device will record the data regularly after every interval. The default log interval is **10 minutes**.
- 3) **Time-zone:** Select the respective time zone. By default, the time zone is **UTC+00:00**.
- 4) **Run Time:** Displays the runtime of the device based on the log interval you choose. This is an automatic calculation.
- 5) **Temperature Unit:** This option allows you to select the temperature unit. You can choose between **Celsius** or **Fahrenheit**.
- 6) **Stop Mode:** Select the stop mode of your device. You can choose between **stop by button** or an automatic stop when the device **memory is full**.
- 7) **Start Delay:** Select a time after which the logger will automatically start recording after the actual start. You can choose between 3 options. **No Delay:** The device starts recording immediately after the start. **Delay:** You enter a time (in minutes) after which the device will automatically start recording. **Scheduled Time:** You select a date & time at which the device should start recording.
- 8) **Delay Time:** This option is only available if the „Delay“ option has been selected in the start delay menu. Enter your desired delay in minutes in this field.

Device : 1) Log Interval (Minutes): 2)

Timezone : 3) Run Time (Days) : 4)

Temperature Unit : 5) Stop Mode : 6)

Start Delay : 7) Delay Time (Minutes) : 8)

Scheduled Start (Date) : 9) Scheduled Start (Time) : 10)

Device Name : 11)

12)	Temperature Threshold/°C	Alarm Type	Alarm Delay (Minutes)
<input type="checkbox"/> High 3	13) <input type="text" value="0,0"/>	14) <input type="text" value="Single"/>	15) <input type="text" value="0"/>
<input type="checkbox"/> High 2	<input type="text" value="0,0"/>	<input type="text" value="Single"/>	<input type="text" value="0"/>
<input type="checkbox"/> High 1	<input type="text" value="0,0"/>	<input type="text" value="Single"/>	<input type="text" value="0"/>
<input type="checkbox"/> Low 1	<input type="text" value="0,0"/>	<input type="text" value="Single"/>	<input type="text" value="0"/>
<input type="checkbox"/> Low 2	<input type="text" value="0,0"/>	<input type="text" value="Single"/>	<input type="text" value="0"/>
<input type="checkbox"/> Low 3	<input type="text" value="0,0"/>	<input type="text" value="Single"/>	<input type="text" value="0"/>

Generate Config File 16)

17)

- 9) **Scheduled Start (Date):** This option is only available if the “Scheduled Time” option has been selected in the start delay menu. Enter your desired date for a scheduled start here.
- 10) **Scheduled Start (Time):** This option is only available if the “Scheduled Time” option has been selected in the start delay menu. Enter your desired time for a scheduled start here.
- 11) **Device Name:** Choose a **description** for your device.
- 12) **Temperature Mode:** Choose the temperature modes for which you want to set thresholds & alarms (Max. **3 High** and **3 Low** thresholds).
- 13) **Temperature Threshold:** Set your temperature and/or humidity threshold for which the alarms should get triggered and recorded.
- 14) **Alarm Type:** Choose between **Single** or **Cumulative** alarm types.
- 15) **Alarm Delay:** Select a time period (in minutes) that may elapse before an alarm is triggered if your alarm limits are exceeded.
- 16) **Generate Config File:** Press this button once your configuration is complete. It will then be automatically transferred to your device and it is immediately ready for use.
- 17) **Progress Bar:** This loading bar shows you the progress of the transfer of the configuration to your device. Please do not unplug the logger from the PC until this bar has finished loading and you have received confirmation of the successful save operation.

Contact Information



Do you have any questions? Please contact us - our experienced team will be happy to support you.

sales@tempmate.com

+49 7131 6354 0

tempmate GmbH
Wannenäckerstr. 41
74078 Heilbronn, Germany

Tel. +49-7131-6354-0
sales@tempmate.com
www.tempmate.com